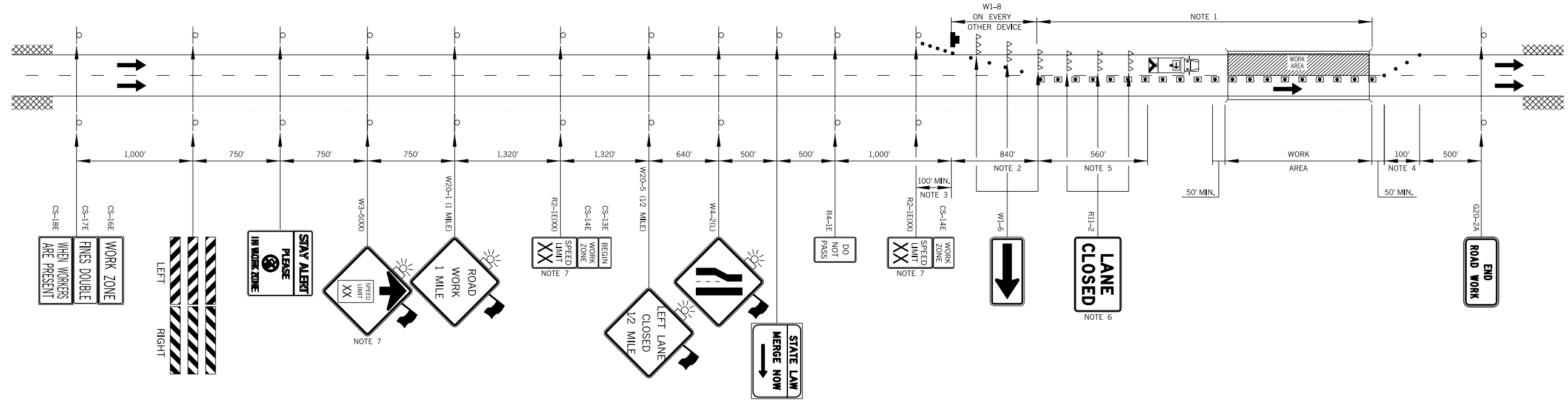


REVISIONS		
REV. NO.	DESCRIPTION	DATE

THERE IS NO SUGGESTED SEQUENCE OF CONSTRUCTION IN THIS DRAWING. INSIDE AND OUTSIDE LANES SHALL BE WORKED AS STATED IN THE PLANS OR AS DIRECTED BY THE ENGINEER. THE DETAILS SHOWN ARE FOR ONE LANE OF TRAFFIC CONTROL. ALL TRAFFIC CONTROL FOR THE ALTERNATE LANE WILL BE OPPOSITE OF THAT SHOWN.



**NOTE 1**  
 MAXIMUM SPACING BETWEEN CHANNELIZING DEVICES (FEET) SHALL BE TWICE THE POSTED SPEED LIMIT (M.P.H.) WITH THE FOLLOWING EXCEPTIONS. SPACING SHALL NOT EXCEED 50 FEET FOR CONES OR TUBE CHANNELIZERS. SPACING SHALL NOT EXCEED 75 FEET FOR CHANNELIZER CONES. SPACING SHALL NOT EXCEED 100 FEET FOR TYPE II BARRICADES, VERTICAL PANELS OR DRUMS.

**NOTE 2**  
 MAXIMUM SPACING BETWEEN CHANNELIZING DEVICES (FEET) SHALL BE EQUAL TO THE POSTED SPEED LIMIT (M.P.H.) WITH THE FOLLOWING EXCEPTIONS. SPACING SHALL NOT EXCEED 25 FEET FOR CONES OR TUBE CHANNELIZERS. SPACING SHALL NOT EXCEED 50 FEET FOR TYPE II BARRICADES, VERTICAL PANELS OR DRUMS.

**NOTE 3**  
 A MINIMUM OF FIVE (5) CHANNELIZING DEVICES SHALL BE PLACED THROUGH THIS TAPER.

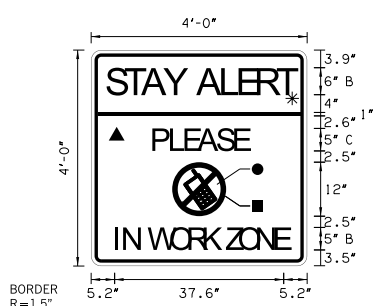
**NOTE 4**  
 DOWNSTREAM TAPERS SHALL CONTAIN A MINIMUM OF FOUR (4) CHANNELIZING DEVICES.

**NOTE 5**  
 A LONGITUDINAL BUFFER AREA, TO ALLOW WORKERS TIME TO EVACUATE THE WORK AREA, SHOULD BE PROVIDED. FOR GUIDELINES ON SETTING THE LENGTH OF THIS BUFFER, SEE STANDARD DRAWING TCS2-1-(LATEST REVISION). ACTUAL LENGTH SHALL BE DETERMINED BY FIELD CONDITIONS AND THE JUDGEMENT OF THE ENGINEER.

**NOTE 6**  
 TYPE III BARRICADES WITH SIGNS READING "LANE CLOSED" (R11-2) SHALL BE PLACED EVERY 2,000 FEET THROUGH ACTIVITY AREA. THESE TYPE III BARRICADES AND SIGNS MAY BE OMITTED ON MOVING OPERATIONS AND SHORT DURATION PROJECTS.

**NOTE 7**  
 CONSTRUCTION SPEED LIMIT TO BE DETERMINED BY THE DIVISION ENGINEER.

FOR ADDITIONAL INFORMATION ABOUT TAPER LENGTHS AND SPACING OF CHANNELIZING DEVICES, SEE STANDARD DRAWING TCS2-1-(LATEST REVISION).



- COLOR:**  
 LEGEND, SYMBOL AND BORDER  
 BLACK (NON-REFLECTORIZED)  
 BACKGROUND:  
 ▲ FLUORESCENT ORANGE (REFLECTORIZED)  
 \* FLUORESCENT YELLOW (REFLECTORIZED)  
 ● WHITE (REFLECTORIZED)  
 ■ RED (TRANSPARENT)

NOT TO SCALE

**KEY:**

	SIGN
	DRUM
	CHANNELIZING CONE
	WORK AREA
	ARROW DISPLAY
	SHADOW VEHICLE
	TRUCK MOUNTED ATTENUATOR
	TYPE III BARRICADES

<b>TRAFFIC CONTROL DETAIL</b> BRIDGES (C, D, F & G)		Draw	SC	5/16
		Design	SC	5/16
STATE OF OKLAHOMA		Checked	KCD	5/16
		TRAFFIC ENGINEERING TAREK MAAROUF		
DEPARTMENT OF TRANSPORTATION		DIVISION 2	JOB PIECE NO. 31697(04)	SHEET NO. T002
MULTIPLE COUNTY				